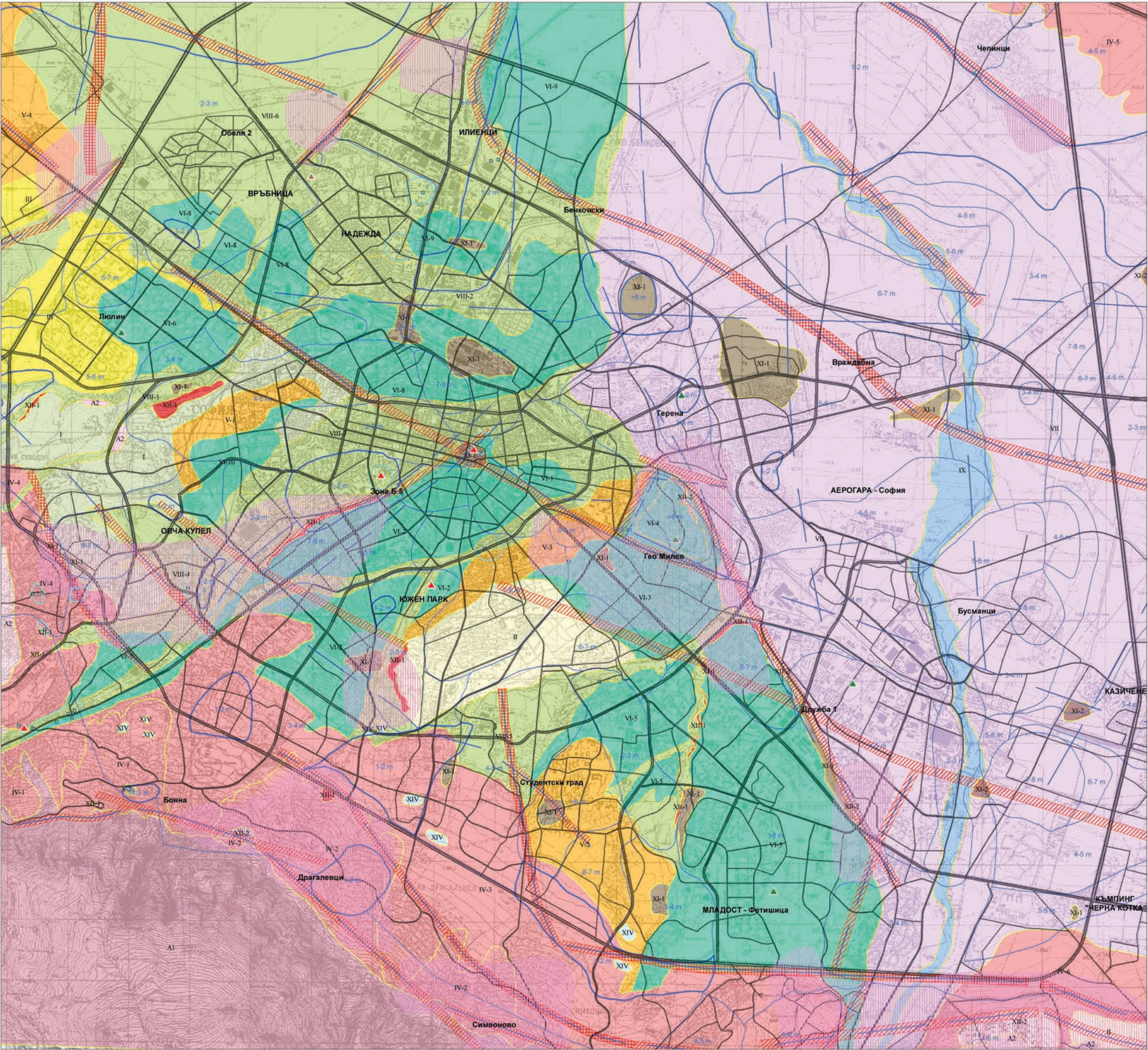


MASTER PLAN OF  
SOFIA MUNICIPALITY



GEOLOGY AND MINERAL WATERS

ENGINEERING, GEOLOGICAL AND  
HYDROGEOLOGICAL ZONING OF SOFIA



- LANDS FAVOURABLE FOR CONSTRUCTION ACTIVITIES**
- A1 - Magmatic rocks, Pre-neogene magmatic and sedimentary rocks
  - A2 - Vulkanogenic sedimentary rocks, Pre-neogene magmatic and sedimentary rocks
  - I - Particulate clay with sand lenses between Ovcha kupel and Lyulin, Neogene sediments
  - II - Sands and gravel in Lozents, Neogene sediments
  - III - Attenuation of sands, gravel and clay in Lyulin, Neogene sediments
  - IV-1 - Proluvial sandy gravel clays from Knyazhevo to Boyana
  - IV-2 - Proluvial sandy gravel clays between Boyana and Simeonovo
  - IV-3 - Proluvial sandy gravel clays at the foot of Vitosha
  - IV-4 - Proluvial sandy gravel clays in Gorna Banya and south of it
  - IV-5 - Proluvial sandy gravel clays in Chepintsi and Negovan
  - IV-6 - Proluvial sandy gravel clays between German and Lozen
  - V-1 - Deluvial clays and sandy clays in Zapaden park neighbourhood
  - V-2 - Deluvial clays and sandy clays south of Darvenitsa neighbourhood
  - V-3 - Deluvial clays and sandy clays north-west of Lozents to Slatinski redut neighbourhoods
  - V-4 - Deluvial clays and sandy clays north of Bozhurishte
  - VI-1 - Alluvial clay and gravel in Moskovska str., Al Nevski square, Vasil Levski monument
  - VI-10 - Alluvial clay and gravel in southern and south-eastern part of Zapaden park
  - VI-2 - Alluvial clay and gravel in Saint Nedelya square, Russian monument square, Lagera neighbourhood
  - VI-3 - Alluvial clay and gravel in Izlok and Geo Milev neighbourhoods
  - VI-4 - Alluvial clay and gravel in Slatinski redut
  - VI-5 - Alluvial clay and gravel in Mladost and Darvenitsa neighbourhoods
  - VI-6 - Alluvial clay and gravel in western part of Lyulin neighbourhood
  - VI-7 - Alluvial clay and gravel in south-west of Ovcha kupel
  - VI-8 - Alluvial clay and gravel in Zaharna fabrika neighbourhood, Central station, Orlandovtsi neighbourhood
  - VI-9 - Alluvial clay and gravel in Benkovski neighbourhood
  - VII - Alluvial clay and gravel in no floodplain terrace of the Iskar river
  - VIII-1 - Alluvial sand and gravel from the river terrace of Suhodolska to Slivnitsa bid.
  - VIII-2 - Alluvial sand and gravel from the river terrace of Suhodolska, north of Slivnitsa bid.
  - VIII-3 - Alluvial sand and gravel from the river terraces of Vladayska, Boyanska and Perlovska rivers
  - VIII-4 - Alluvial sand and gravel from the river terraces of the rivers south-west of Ovcha kupel neighbourhood
  - VIII-5 - Alluvial sand and gravel from the river terraces of Adzhibaritisa, Novachitsa and Vartopo rivers
  - VIII-6 - Alluvial sand and gravel from the river terraces of Kakach and Suhodolska rivers
- LANDS UNFAVOURABLE FOR CONSTRUCTION ACTIVITIES**
- IX - Floodplain terrace of the Iskar River, Quaternary sediments
  - X-1 - Marsh clays, Special construction soils
  - X-2 - Peat, Special construction soils
  - XI-1 - Technogenic embankments, Special construction soils
  - XI-2 - Pits and quarries, Special construction soils
  - XII-1 - Landslides developed, Special construction soils
  - XII-2 - Potential landslide slopes, Special construction soils
  - XIV - Marshy lands, Special construction soils
  - XIII-1 - Current active fault zones
  - XIII-2 - Potential fault zones
  - Zone seismic coefficient 0.30 (IX + degree)
- HYDROGEOLOGY**
- source of mineral water
  - Protective zone I (zone A) of hydrothermal deposits
- LEVEL OF UNDERGROUND WATERS GROWING TRIALS**
- 1-2 m
  - > 2 m
- MINERAL WATERS**
- MINERAL WATERS FROM MANIFESTED HYDRO-THERMAL DEPOSITS
  - MINERAL WATERS FROM MANIFESTED DEPOSITS WITH ADDITIONAL POTENTIAL
  - MINERAL WATERS FROM POTENTIAL HYDRO-THERMAL DEPOSITS

SOFIA MUNICIPALITY  
Architecture and Town Planning Department  
Sofproect - Master Plan