

MASTER PLAN OF  
SOFIA MUNICIPALITY

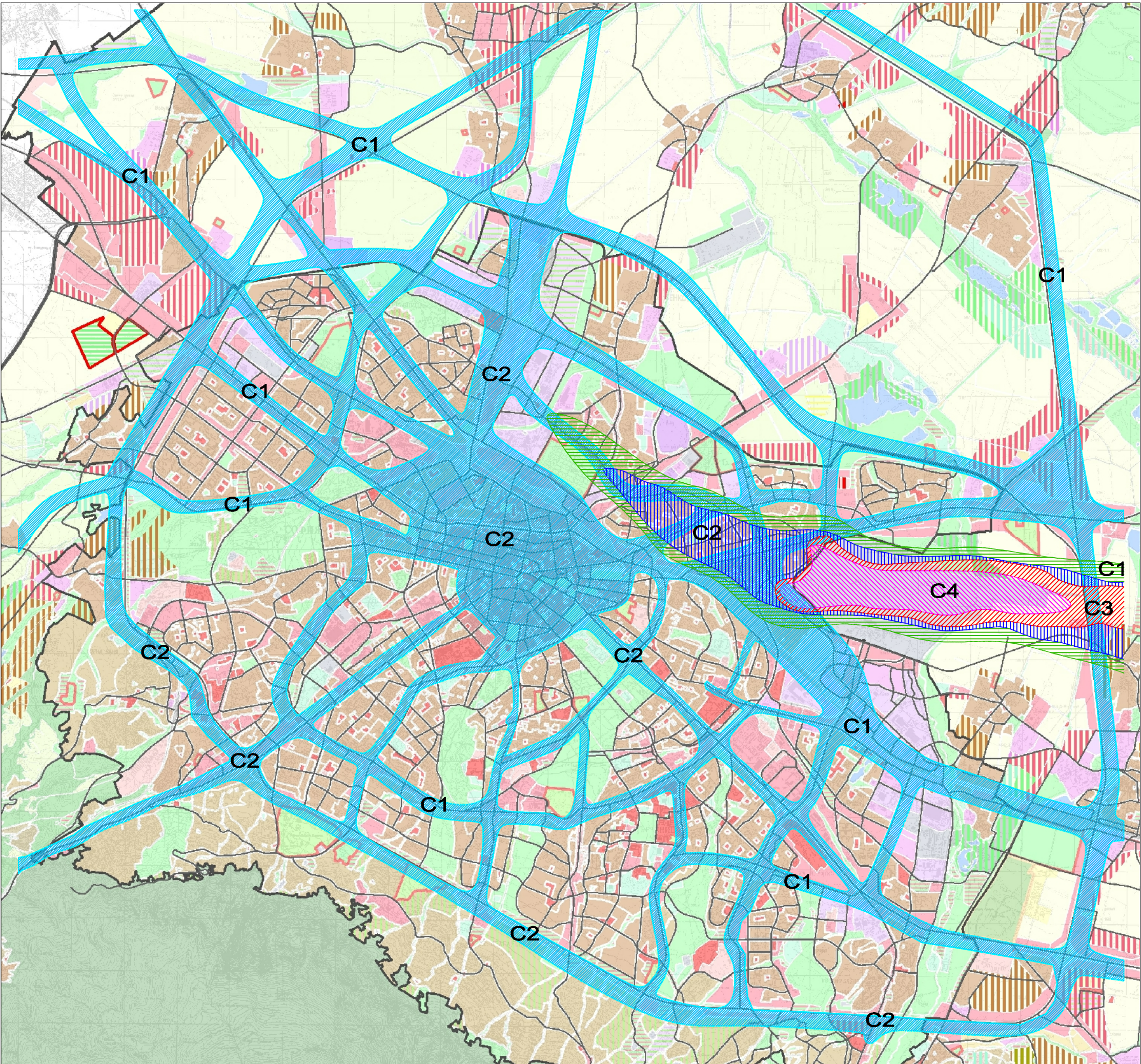


ENVIRONMENTAL PROGNOSIS

ANTHROPOGENIC ENVIRONMENT  
ACOUSTIC LOAD

- TERRITORIES WITH ENVIRONMENTAL ACOUSTIC LOAD ABOVE THE RATED ALLOWED NORM REQUIREMENTS DUE TO TRANSPORT (45-65 DB(A))
- TERRITORIES WITH ENVIRONMENTAL ACOUSTIC LOAD DUE TO AIRPORT SOFIA - DECREASE TO THE RATED ALLOWED NORM REQUIREMENTS
- TERRITORIES WITH ENVIRONMENTAL ACOUSTIC LOAD DUE TO AIRPORT SOFIA - 65 DB(A) - 75 DB(A)
- TERRITORIES WITH ENVIRONMENTAL ACOUSTIC LOAD DUE TO AIRPORT SOFIA - 75 DB(A) - 100 DB(A)
- TERRITORIES WITH ENVIRONMENTAL ACOUSTIC LOAD DUE TO AIRPORT SOFIA - 100 DB(A) - 120 DB(A)

- C1** ZONE WITH NOISE ABOVE 65 DB(A)
- C2** ZONE WITH NOISE 65 DB(A) - 75 DB(A)
- C3** ZONE WITH NOISE 75 DB(A) - 100 DB(A)
- C4** ZONE WITH NOISE ABOVE 100 DB(A)



SOFIA MUNICIPALITY  
Architecture and Town Planning Department  
Sofproect - Master Plan