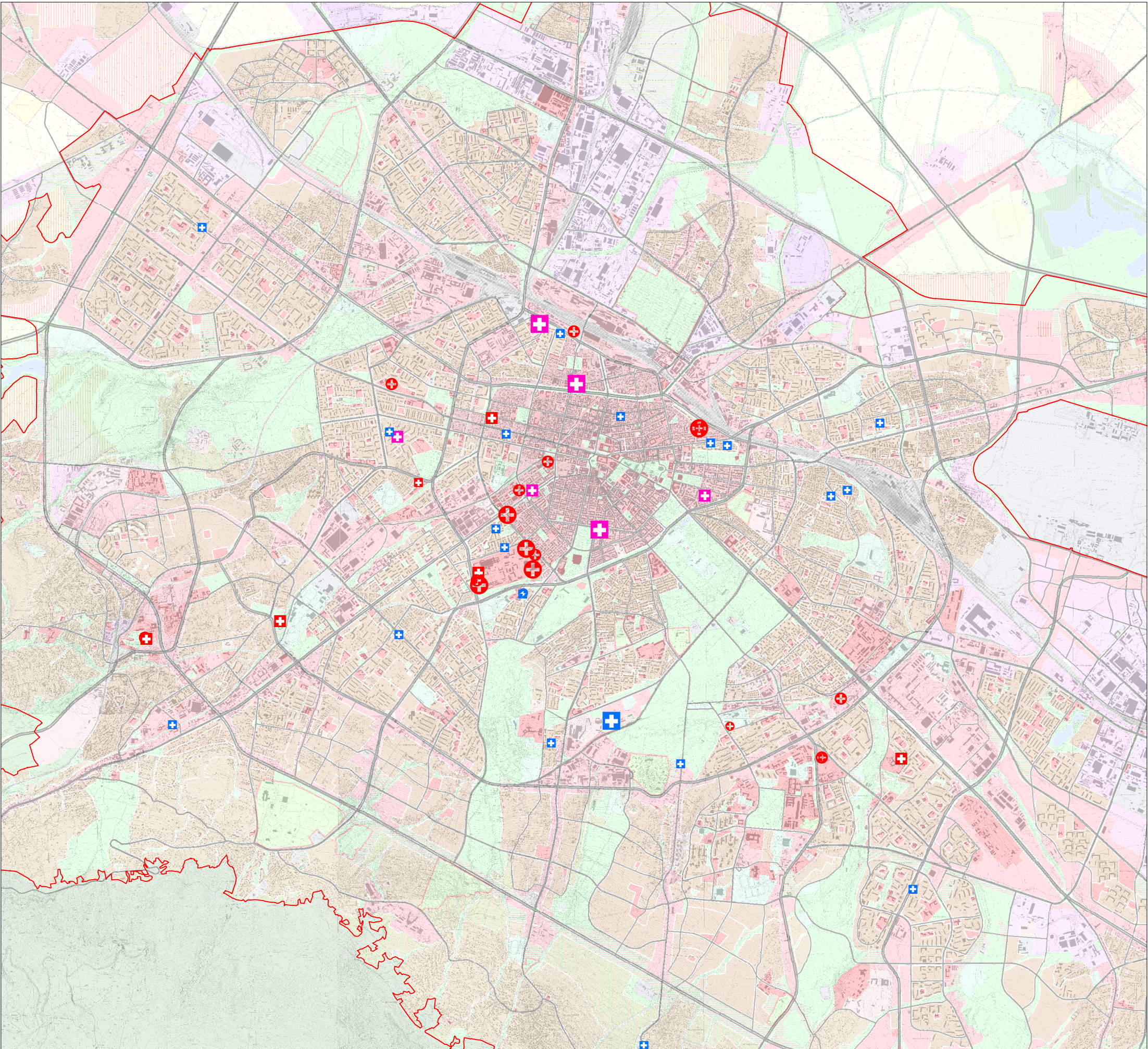


MASTER PLAN OF
SOFIA MUNICIPALITY



TERRITORIAL LOCATION OF
HOSPITAL INSTITUTIONS (ON CAPACITY)
IN SOFIA MUNICIPALITY IN 2008

- Types of medical institutions
- Hospital institutions
- ⊕ National and university
 - ⊕ Specialized and multi-profiled hospital for active treatment
- On capacity
- Large (more than 400 beds)
 - Medium (from 101 to 400 beds)
 - Small (to 100 beds)
- Type of financing
- Public
 - Municipal
 - Private



SOFIA MUNICIPALITY
Architecture and Town Planning Department
Sofproect - Master Plan